



GSF in Community Hospitals

Improving care for people in the final years of life in your community hospital and giving them recognised 'Gold Standard' care - here's how to do it!



Why the GSF Community Hospitals Training Programme can help you

- GSF is the **most widely used** and well developed End of Life Care Training Programme in the UK, it includes all resources required to succeed plus intrinsic evaluations demonstrating progress - see over
- The GSF Community Hospitals Programme is the **only nationally recognised training programme** for End of Life care for Community Hospitals; helping them to improve care for **all people** in the final years of life - estimated to be at least 30% of all patients in hospital at any one time
- It is the only programme with a formalised quality assurance **Accreditation process leading to the GSF Quality Hallmark award; supported by the Community Hospitals Association**
- It meets NICE Standards, CQUIN targets, Commissioning priorities etc.
- It will help you meet the new revised **CQC standards on end of life care**
- It encourages **compassionate care**, enabling a deeper level of **culture change** - Head, Hands and Heart



What we've learnt from earlier phases of this GSF programme – with 41 community hospitals trained in Cornwall, Dorset and Cumbria and several hospitals already accredited we can see how well this works ...

- *“Community hospitals take naturally to this work,and GSF helps us focus even more on proactive thinking and planning ahead. It helps us work better and things go smoothly”*
- *“It helped us be even more patient focussed in our care....we were able to discuss things more openly - there was a much more open and calm atmosphere and we knew we were listening to them and their families better”*
- *“We can identify 30-40% of our patients early, code them according to their needs and try to help them earlier”*
Teams from Phase 1 GSF going for Accreditation

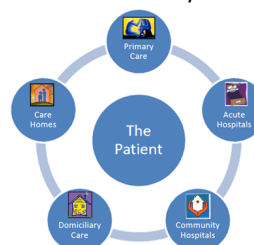
Care Quality Commission (CQC) and End of Life Care



EOLC has now been specifically identified as one of the core areas for CQC inspection, assessed against five domains. Hospitals will be graded against standards in end of life care for the first time.

GSF Quality Improvement Programmes can support you to improve End of Life Care in your hospital and help you demonstrate quality at your CQC inspection .GSF Quality Hallmark Awards are recognised as a kite-mark of excellence in care homes, practices and hospitals .

GSF improving Integrated Cross Boundary Care



The National Community Hospital Association supports the GSF Accreditation Quality Hallmark Award.



GSF in Community Hospitals

Quality Improvement

Quality Assurance

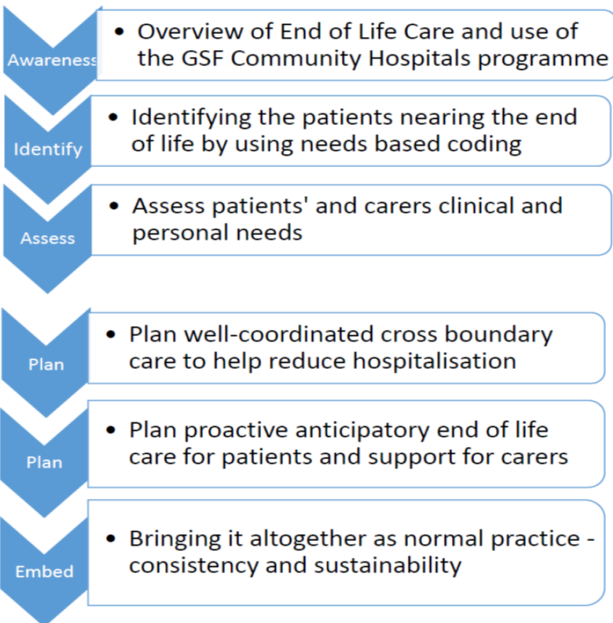
Quality Recognition

Teams representing 4 Accredited wards from Community Hospitals in Cornwall & Dorset with their GSF Quality Hallmark Awards, co-badged by the Community Hospitals Association, at the GSF Conference September 2015.

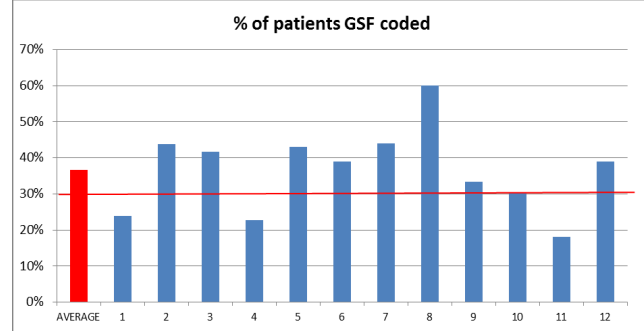


"GSF has really helped usin improving our coordination and communication. For patients, this means we now engage in more detailed conversations with them about the care they want and where they want to receive it and share these wishes with our health colleagues in the community, which means everyone is working in unison."

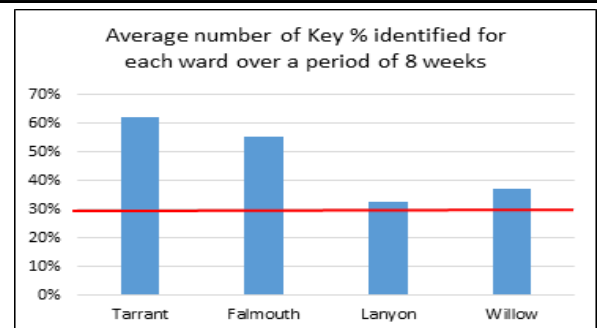
Pam Butler, Sister at Lamorna Ward, Camborne Redruth Community Hospital



Snapshot assessment of the proportion of patients identified for the GSF Register in last year of life in Cornish Accredited Community Hospitals.
Note- average of 37% of patients identified /ward



Note average of 31% - 66% of patients identified to be in last year of life in Round 3 Community Hospitals



Resources included in the GSF Community Hospitals Training Programme

WHAT TO DO NEXT?

For further information, a registration form, reports or a discussion on how this could be of benefit to you please contact The Gold Standards Framework Centre on:

communityhospitals@gsfcentre.co.uk • 01743 291891 •

www.goldstandardsframework.org.uk — [Community Hospitals Programme](#)

